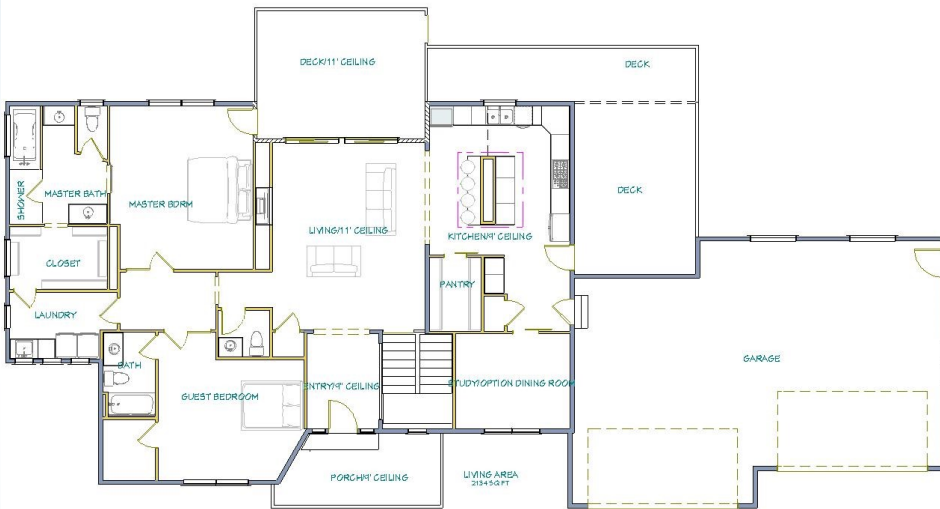


The Gray's Peak Plan #104



Main Level



The Gray's Peak is designed to capture the great outdoor living we experience here in Colorado. Featuring 2 covered decks for both living and dining, this home is a wonderful home experience the beautiful scenery we have.

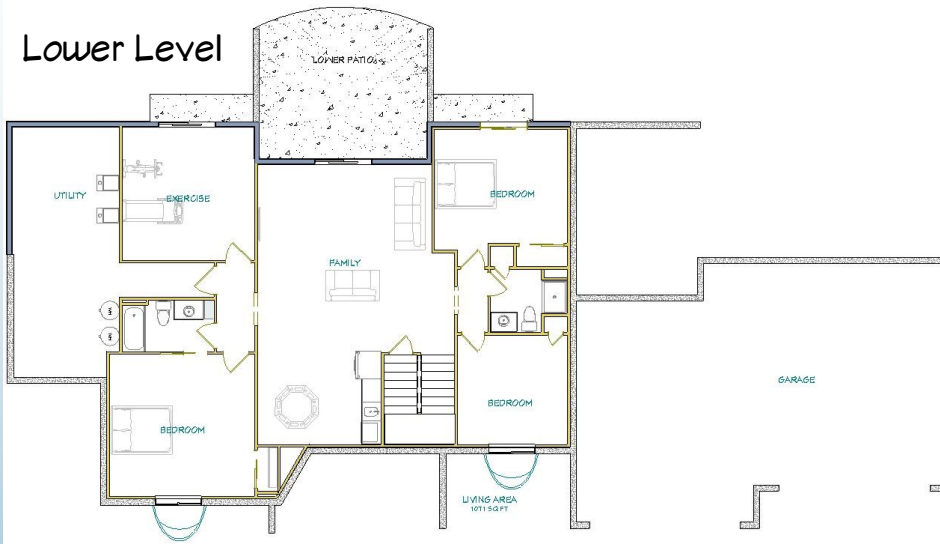
Main level master, flex room, study with optional exterior entry and large living space with 11' ceilings capture the main level.

Lower level features 3 bedrooms, recreation space with wet bar and exercise space. Plenty of room for the whole family.

Pricing starting at \$699,825

Contact us today about building this plan on your lot or one of ours.

Lower Level



5 Beds/4 Baths/Study

Main Level—2132 SF

Lower Level—1867 SF Finished

Garage—1035 SF (4 Car)

Covered Porches—840 SF

Contact: 719-347-1480
 jeff@jshomesinc.com
 www.JSHomesInc.com

Plans and Specifications subject to change. Price does not include homesite.